

## INSPECTION GUIDELINE 1

### ORBIS BulkPak®

ORBIS is committed to the safe use of plastic BulkPaks. The following information is provided to insure that ORBIS' customers understand the limit of damage that a BulkPak may sustain before it is rendered "unsafe to use".

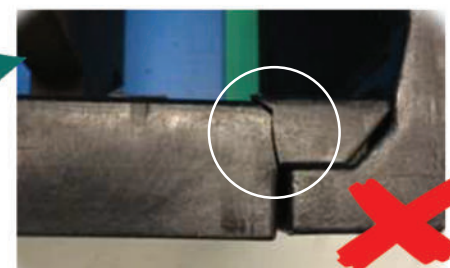
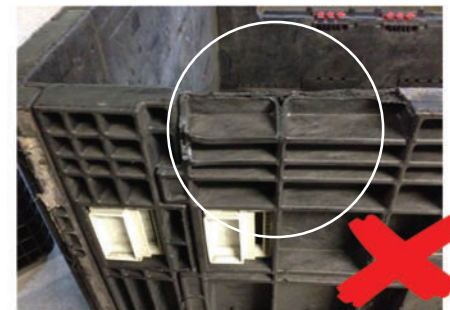
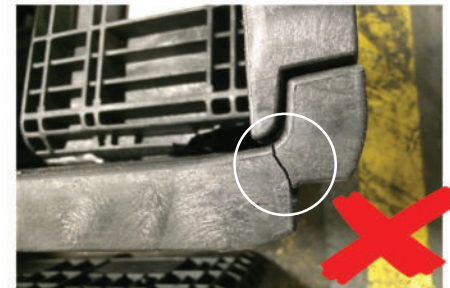
#### Damage to the connection points or missing access doors

A container should be repaired if the following occurs to the sidewall:

A break or crack that prevents safe containment of the load

A sidewall separates from the base

A split of any size is discovered in the corner of a warp around sidewall

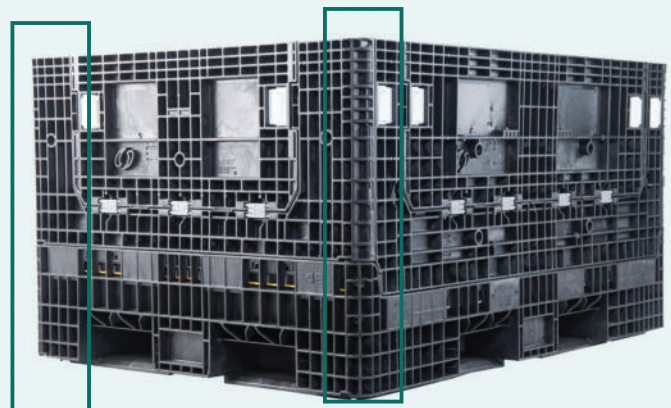


Attention when recycling: Steel runners cannot be recycled.

Note: Damage of the middle parts does not compromise the performance of the bin. Please remove completely when broken to avoid problems in stacking applications.



Note: The corner columns are the most important area on the BulkPak. If features are damaged in this area, the part should be replaced/repared.



## INSPECTION GUIDELINE 2

### ORBIS BulkPak®

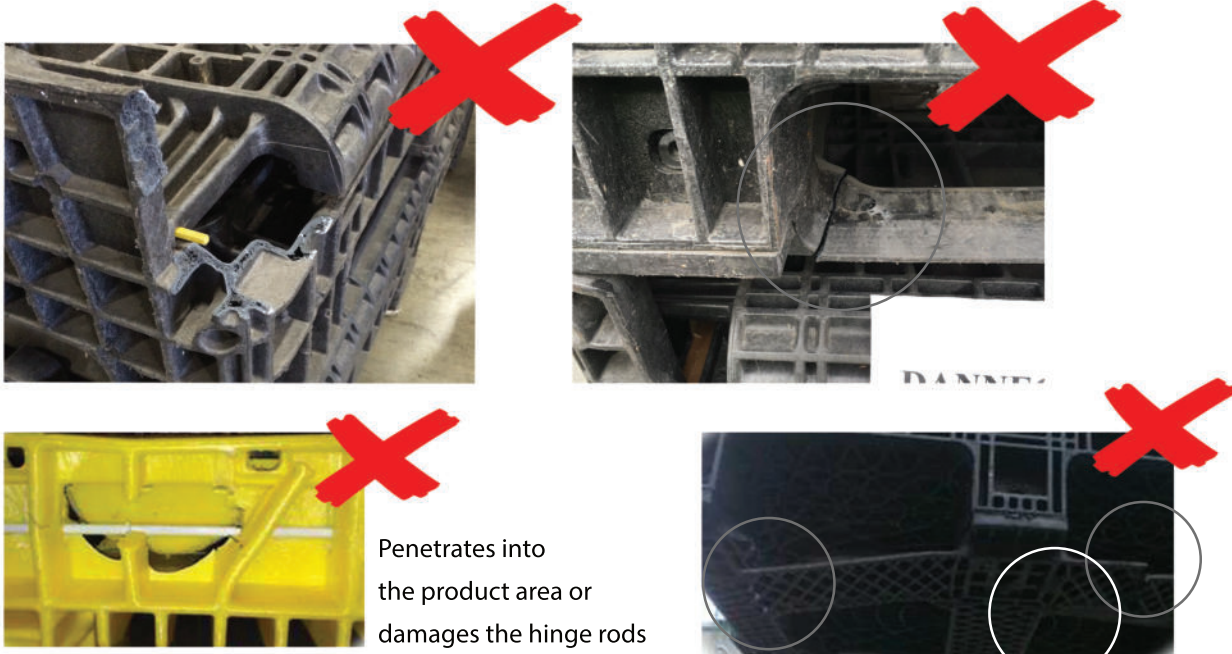
#### Damage to the corners of the base, connection points with panels or stringers

A container should be repaired if the following occurs to the base:

A corner or center foot has been broken and separated from the base

A clean break occurs along the retainer wall that supports in open position

A break to the surface that prevents containment of the load



Note: The following may occur to the base without rendering a container unsafe to use:

Broken fork straps may be tolerated with the condition that the container is not used in a racking application

A nick, gouge and/or scrape that does not completely penetrate the base



#### Damage or missing latches, hinges or hinge rods

- Missing or damaged access door hinges and/or hinge pins should be replaced upon detection
- Broken panel hinge rods should be replaced upon detection
- A broken or missing sidewall or access door latch should be replaced upon detection