



 Powered by Menasha Corporation

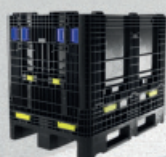
ORBIS EUROPE

PRODUCT CATALOG

INNOVATIVE PACKAGING SOLUTIONS
FOR A SUSTAINABLE FUTURE



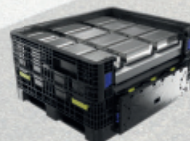
1200 x 800



1200 x 1000



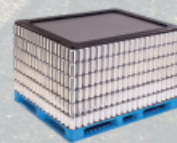
Dangerous Goods
Packaging



XXLPak



Pallet Systems



20
21



INNOVATIVE



DURABLE



SUSTAINABLE

www.orbiseurope.eu

europe@orbiscorporation.com



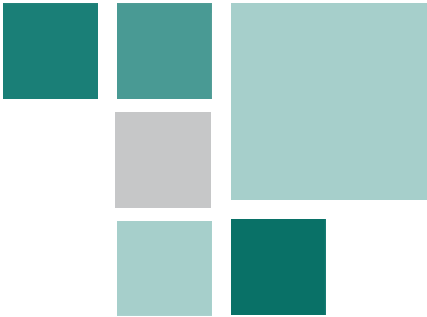
TABLE OF CONTENT

Your partner for reusable transport packaging

Sustainable plastic alternatives for steel gitterboxes, steel racks, expendable one-way packaging and wooden pallets



2	ORBIS PRODUCT OVERVIEW
4	SUSTAINABILITY
5	PRODUCT LIFE CYCLE
6	SERVICES
8	MARKET OVERVIEW
10	OVERVIEW FOLDABLE LARGE CONTAINERS
12	GitterPak®
14	HDB1210
16	IonPak®
18	OceanPak®
19	HDR3230
20	XXLPak
22	OVERVIEW PALLETS
23	Food & Beverage Pallets
24	Layer Pads & Top Frames
25	PRODUCT SPECIFICATIONS



PRODUCT OVERVIEW

Reusable plastic packaging from ORBIS Europe is used to **move, store and distribute** products within single operations and entire supply chains. The conversion from wooden/corrugated boxes, steel racks or gitterboxes to reusable plastic boxes has brought many world-class companies significant **financial savings** and **operational benefits**.

The ORBIS BulkPak® brand of foldable large containers helps global automotive and industrial companies streamline part shipments and **reduce supply chain waste**. Besides plastic FLCs, ORBIS Europe offers a variety of plastic pallets for food and beverage applications that optimise **efficiency and sustainability** in the retail supply chain.



Foldable Large Containers

Plastic foldable large containers for automotive and industrial applications - weight capacity up to 900 kg.
1200 x 800 GitterPak® p.12 XXLPak p.20
1200 x 1000 HDB1210 p.14



IonPak® Dangerous Goods Packaging

Innovative plastic FLC for the transportation of lithium-ion batteries and other solid dangerous goods.

Available footprints: 1200 x 800 / 1200 x 1000 p.16



Plastic Pallet Systems

Standard footprints for the efficient transportation of cans, bottles and other rigid products.

Different sizes available upon request p.22



Services

Learn more about how ORBIS Europe supports you with innovative packaging solutions and service offerings.

Additional information p.6

INNOVATIVE DURABLE SUSTAINABLE



CO2 reduction



Long-term savings



Durability and long service life



Improved security and ergonomics



Returnable and recyclable designs



Lean production



Foldable, stackable designs



Enhanced repairability



Improved efficiency



Reduced packaging waste



Helping Customers Drive Sustainability

ORBIS EUROPE HELPS YOU MOVE YOUR PRODUCT IN A FAST, SAFE AND COST-EFFICIENT WAY.

Every day, we help our customers reduce their overall environmental impact by **shifting from single-use to returnable packaging solutions**. In order to improve sustainability and efficiency, we design a customised solution that suits your supply chain needs and execute a reusable packaging program for **longer-term cost savings and sustainability**.

RECYCLE WITH ORBIS EUROPE

ORBIS Europe provides alternatives to the disposal of surplus, damaged or obsolete plastic packaging.

Recycle with ORBIS is a comprehensive program fostering a circular economy approach by recycling plastic packaging. By design, plastic FLCs and pallets are robust and reusable over the course of their service life. Eventually, we offer to buyback obsolete containers at the end of their service life for the raw material value. The plastic raw materials can be recovered, recycled and reprocessed into new useful packaging products. That prevents the plastics from entering the solid waste stream and harming the environment.



REPURPOSING PLASTIC WITH THE
OCEAN IN MIND

OCEAN IN MIND

ORBIS' Ocean in Mind program incorporates packaging made with recycled plastic material recovered near major waterways, helping to **clean up coastline waste** and stimulate local economies. Once collected, the plastic is sorted, reprocessed and used to make reusable packaging. ORBIS collaborates with customers to integrate this material into products to fit their specific supply chain needs and sustainability goals.

Contact your ORBIS sales representative to learn more about the program.

THE PRODUCT LIFE CYCLE



THE ADDED VALUE OF ORBIS PLASTIC PACKAGING



- European and American standard footprints available
- Customer-specific development, tool making and production
- Flexibility and direct availability due to inventory management



- Nearly closed, entirely sustainable raw material cycle
- Reduction of CO₂ emissions by 60-70 kg per load carrier*
- Lower risk for product damage caused by rusting elements



- Significantly longer life cycle
- Attractive ROI
- Reduced CO₂ emissions due to low temperature production



- FLCs with up to 900 kg weight capacity
- UN-certified for solid dangerous goods, e.g. Li-Io batteries
- Improved workplace safety and ergonomics
- Stackable design (up to 1 + 5 static / 1 + 2 dynamic for FLCs)
- Easy and quick maintenance on site




- Optimised space utilisation in return transport & warehouse
- Cost savings due to 1 : 3 return ratio of FLCs



- Further increased ROI
- 100% recyclability of plastic raw materials
- Reprocessing raw materials into new packaging products
- No disposal necessary
- Sustainability due to return to raw material cycle

*according to a calculation with the Walmart Gigaton Calculator

ORBIS PROFESSIONAL SERVICES



ORBIS Europe offers many services to support our customers and help them get the most out of their returnable bulk packaging solutions and pallet systems.

ORBIS engineers and manufactures bulk containers and plastic pallets to deliver truly unique solutions for the most demanding applications. Our portfolio also includes consulting and engineering services (life cycle assessments, total cost of ownership (TCO) calculations, etc.) to satisfy individual customer requirements. With comprehensive services and a broad product range for different industries, we are offering customers a **one-stop-shop** approach.

OUR AREAS OF EXPERTISE

INDUSTRIAL BULK PACKAGING

- Life cycle assessments to compare packaging solutions (including cost savings, CO₂ reduction, recycling)
- Implementation of reusable packaging programs in existing supply chains
- Standard and customised container development with in-house dunnage design capabilities
- Individual trainings on site and handling/maintenance guidelines based on individual requirements

DANGEROUS GOODS

- Durable packaging solutions based on standard footprints with customised protective dunnage
- Qualified consulting and engineering services according RID/ADR
- Project management (from development phase to comprehensive testing and certification)
- Execution of UN-certification process for solid dangerous goods

RETAIL SUPPLY CHAIN

- Life cycle assessments to compare packaging solutions (including cost savings, CO₂ reduction, recycling)
- Large selection of total system solutions (including pallets, layer pads and top frames)
- Implementation of plastic pallets in existing supply chain processes
- Supporting the shift from wooden pallets to plastic alternatives

WE SUPPORT YOU...

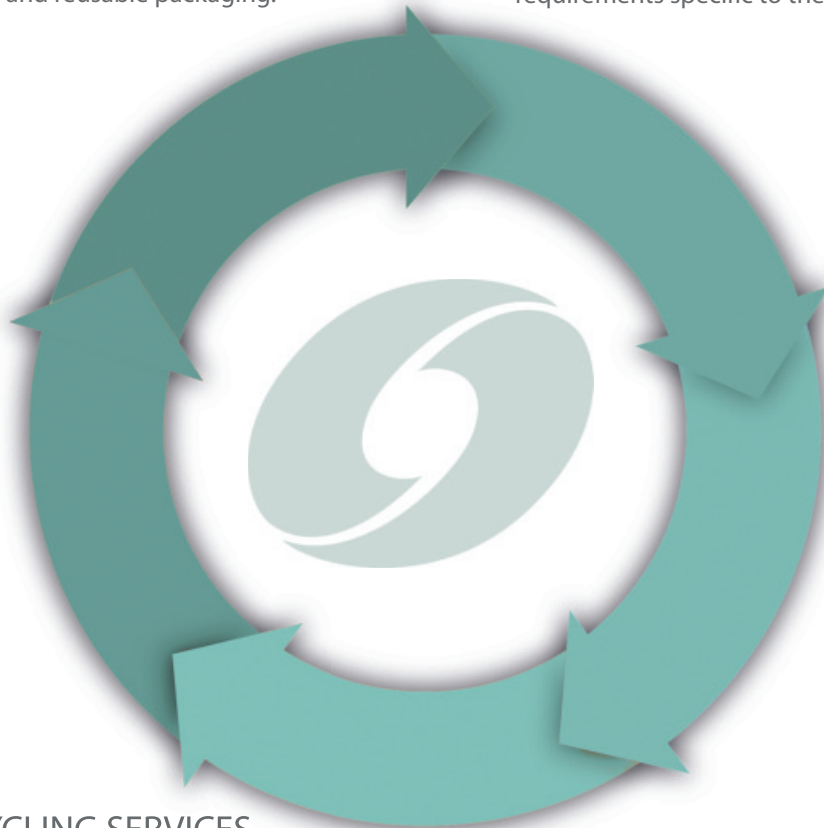
...ALONG THE ENTIRE PACKAGING LIFE CYCLE

1. CONSULTING SERVICES

Using a proven approach, our packaging experts **analyse customers' logistics systems** and look at existing supply chains to ensure that our solution fits the manual and automated processes. ORBIS develops reusable packaging programs for **long-term cost savings and sustainability**, including TCO calculations and life-cycle comparisons of single use and reusable packaging.

2. ENGINEERING SERVICES

Our standard container designs allow for reusability and accommodate a wide variety of dunnage. Also, ORBIS Sales Engineers provide dunnage design capabilities and expertise to provide a fully integrated solution. **We work directly with our customers** to analyse their needs and recommend a customised solution to meet the requirements specific to the application.



4. BUYBACK / RECYCLING SERVICES

At the end of the service life of our load carriers, we offer to buy back the plastics for the material value, considerably reducing the net present value. For an **increased ROI**, you can use the credit to buy new load carriers. We recycle the plastic raw materials and reprocess them into new packaging products. On your side, **no disposal effort and costs** are necessary.

3. REPAIR SERVICES

In the rare case of damages, our FLCs and pallets can be repaired easily and quickly on site. We offer **original spare parts** - from runners to sidewalls. It is up to you: You can repair the packaging yourself by following our clear guidelines or have us take care of everything. Handling guidelines and training literature are available for all maintenance practices.

Contact your ORBIS sales representatives for more information.

✉ europe@orbiscorporation.com

MARKET OVERVIEW

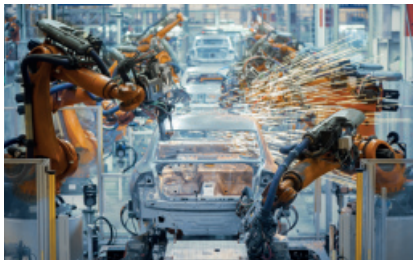
ORBIS Innovative Packaging Solutions are suitable for different industries. The robust FLCs and returnable pallets can be seamlessly integrated into most existing manual and automated supply chains.



INDUSTRIAL MANUFACTURING

ORBIS Europe offers a wide range of standardised and customised reusable packaging systems designed to optimise the supply chain and withstand the rigorous, heavy load requirements of industrial manufacturing markets. From durable pallets to heavy-duty FLCs and custom protective dunnage, ORBIS Europe offers packaging solutions that maximise product flow efficiency in the industrial manufacturing environment.

AUTOMOTIVE INDUSTRY



BATTERY PRODUCTION



AGRICULTURAL MACHINERY



RAILWAY INFRASTRUCTURE



INNOVATIVE PACKAGING SOLUTIONS

adapted to your supply chain

RETAIL

ORBIS reusable plastic pallets and containers are ideal for Retail and FMCG transport and storage applications because of their non-porous surfaces, cleanability and contoured design for easy handling. When compared to wood or fiber alternatives, ORBIS' packaging reduces the risk of nails, wood splinters, dust and other debris from damaging products in the supply chain.

BEVERAGE CAN



FOOD CAN



FMCG






RETAIL




ORBIS works with customers in a variety of different industries. In close cooperation with customers, we adapt our packaging solutions to additional applications.

INNOVATIVE PACKAGING SOLUTIONS FOR

-  Industrial manufacturing
-  Retail
-  and various other applications

OVERVIEW FLCs



Foldable and stackable
with a weight capacity of 900 kg

The ORBIS Europe BulkPak® brand of foldable large containers (FLC) represents an **innovative alternative** to steel gitterboxes and one-way packaging that can be seamlessly integrated into most existing manual and automated supply chains. ORBIS manufactures a portfolio of FLCs **in Europe** using a special manufacturing process. We use **up to 90% recycled materials** which leads to a reduction of CO₂ emissions of 60-70 kg per container. The bulk bins are designed for a long service life in automotive and industrial applications and have a load capacity of **up to 900 kg**.

The BulkPak® FLCs stack securely when full and fold when empty for return trips for **improved truck utilisation** and **significant cost savings**. When collapsed during the return transport, a truck load holds **up to 3 times more** plastic containers compared to steel gitterboxes. At the end of a long service life, we offer to buy back obsolete containers and use the raw materials to produce new packaging products.

BENEFITS AND ADDED VALUES

- Long service life due to production process
- Robust wall design
- Fold-down-ratio of up to 1 : 3 for space savings
- Reducing the costs for return shipment
- Stackable when loaded: up to 1 + 5 static / 1 + 2 dynamic
- Weight capacity of up to 900 kg with low tare weight
- Buyback of obsolete containers
- Up to 100% recyclability of plastic raw materials





GitterPak®

Sustainable and efficient replacement for steel gitterboxes

1200 x 800

HIGHLIGHTS

1 : 1 Gitterbox replacement
Weight capacity of 900 kg



HDB1210

Designed to protect and transport parts in global automotive and industrial supply chains

1200 x 1000

HIGHLIGHTS

Automotive standard footprint
Weight capacity of 900 kg



IonPak® for Dangerous Goods

Plastic FLC for safe and efficient lithium-ion battery transportation

1200 x 800 / 1200 x 1000

HIGHLIGHTS

UN certification 4HS
Approval for up to 400 kg



OceanPak®

For intercontinental shipments and optimized transportation in an ISO sea-container

1190 x 1135

HIGHLIGHTS

Collapsible for return transport
Reduction of disposal costs



XXLPak in Extended Length

Heavy-duty FLCs in inch dimensions and extended length for rugged applications

HIGHLIGHTS

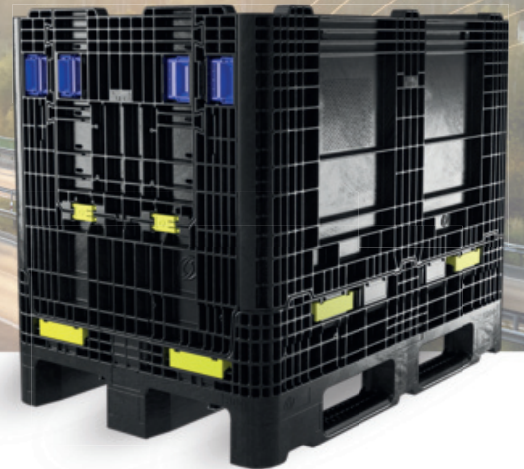
For long and hard-to-fit parts
Heavy-duty applications

FOLDABLE LARGE PLASTIC CONTAINERS

ORBIS Plastic FLCs are suitable for variable applications in automotive industry and industrial manufacturing and help increase sustainability and efficiency in the supply chain.

GitterPak®

1200 x 800



The durable and efficient packaging substitute for steel gitterboxes and other conventional packaging.

As part of the ORBIS line of FLCs, the GitterPak offers logistics advantages, warehouse cost-savings and increased sustainability in the supply chain. The GitterPak is collapsible so that one truck load holds up to 272 folded, empty plastic containers compared to 78 fully-assembled steel gitterboxes. With its all-plastic design, the industrial FLC features a light tare weight compared to metal bins, so trucks will efficiently cube out before weighing out.

GitterPak® Overview

- European standard 1200 x 800 footprint
- Weight capacity of 900 kg
- Collapsible to reduce shipping cost
- Ideal footprint for logistics and automated systems
- Easy to clean, rust-free, preventing metal-on-metal part damage with all plastic design
- Multiple access door configurations
- Multiple bottom configurations





Durable and robust



Improved security and ergonomics



Foldable 1:3 and stackable 1 + 5 (static)

Specifications (All dimensions in mm, unless otherwise indicated)

Model	HDB1208-960
Outside Dimensions (L x W x H)	1200 x 800 x 960
Inside Dimensions (L x W x H)	1120 x 720 x 805
Product Clearance	776
Collapsed Height	354
Container Capacity (kg)	900
Weight (kg)	65

Find more detailed information on page 26.



HDB1208-960 with top cap



HDB1208-960 with three runner base

BULKPAK® FAMILY

HDB1210

1200 x 1000

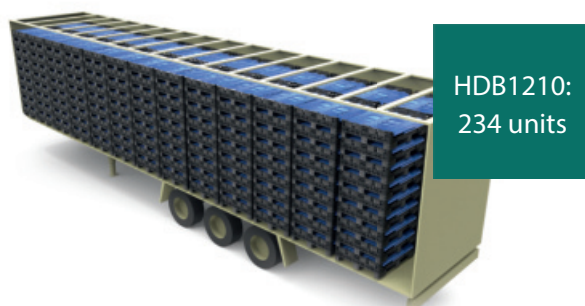


The collapsible heavy-duty HDB1210 is designed to protect and transport parts in global automotive and industrial applications.

Engineered for rugged, heavy-duty applications, the HDB1210 is robust and offers a long service life – leading to an **attractive ROI** and a **lower total cost of ownership**. Key features of the foldable large container (FLC) include multiple heights, access door and bottom configurations as well as enhanced maintenance features for easy, on-site repair and part replacement.

HDB1210 Overview

- Automotive and industrial standard footprint
- Weight capacity of 900 kg
- Collapsible to reduce shipping cost
- Ideal footprint for logistics and automated systems
- Easy to clean, rust-free
- Preventing metal-on-metal part damage with all plastic design
- Multiple heights
- Multiple access door configurations
- Multiple bottom configurations



HDB1210:
234 units



Fixed Wall
Steel:
78 units

Specifications (All dimensions in mm, unless otherwise indicated)

Model	1200 x 1000 x 600/582		1200 x 1000 x 998/980	
	HDB1210-600 STR	HDB1210-582 R	HDB1210-998 STR	HDB1210-980 R
Available Bottom Configuration	Full Stringer	3 Runners	Full Stringer	3 Runners
Outside Dimensions (L x W x H)	1200 x 1000 x 600	1200 x 1000 x 582	1200 x 1000 x 998	1200 x 1000 x 980
Inside Dimensions (L x W x H)	1113 x 913 x 462	1113 x 913 x 462	1113 x 913 x 860	1113 x 913 x 860
Product Clearance	434	434	834	834
Collapsed Height	335	317	335	317
Container Capacity (kg)	900	900	900	900
Weight (kg)	54	51	73	69

Find more detailed information on page 27.



Durable and robust

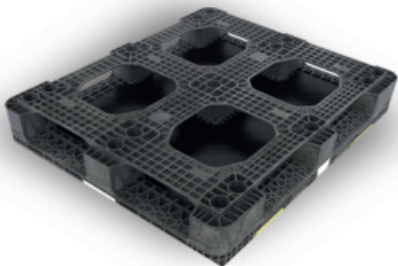


Improved security and ergonomics

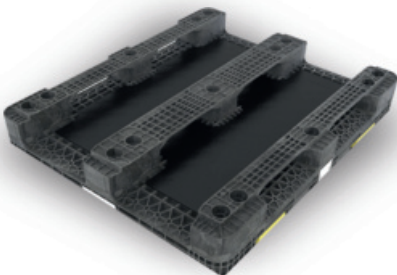


Foldable 1 : 3 and stackable 1 + 5 static / 1 + 2 dynamic

Bottom Configurations



Full Stringer (STR)



3 Runner (R)

BULKPAK® FAMILY

IonPak®

1200 x 800 / 1200 x 1000

The collapsible heavy-duty IonPak® is designed to transport solid dangerous goods, such as lithium-ion batteries, in a safe, damage-free and cost-efficient way.



The IonPak was launched as an efficient and safe solution for lithium-ion battery transport and is **UN-certified** to transport solid dangerous goods (4H2). With **standard footprints**, the collapsible heavy-duty container interfaces seamlessly with customers' existing supply chains. By using recycled and recyclable materials during production of the IonPak, CO2-emissions can be reduced by 60-75 kg per container, helping OEMs reach their emissions goals.

The reusable IonPak® is suitable for **solid dangerous goods**, such as battery cells, battery modules, prototypes and batteries in equipment. The transportation of airbags and belt tensioners is possible after successful completion of a bonfire test. **We are happy to advise on any other application.**



Qualified Consulting
by Certified
Dangerous Goods
Experts

IonPak® Overview

- ORBIS IonPak® is certified to transport solid dangerous goods (e.g. 4H2)
- Coverts conventional one-way packaging to a collapsible, reusable plastic container
- Customised protective dunnage for increased product protection
- Automotive industry standard footprints designed to interface with customers existing supply chain
- Increased return ratio and warehousing savings with a collapsible, stackable container design
- Eliminated risk of rust contamination and operator safety hazards
- Approval for weight capacity of up to 400 kg
- Eliminated packaging disposal by reusable, recyclable designs

Specifications (All dimensions in mm, unless otherwise indicated)

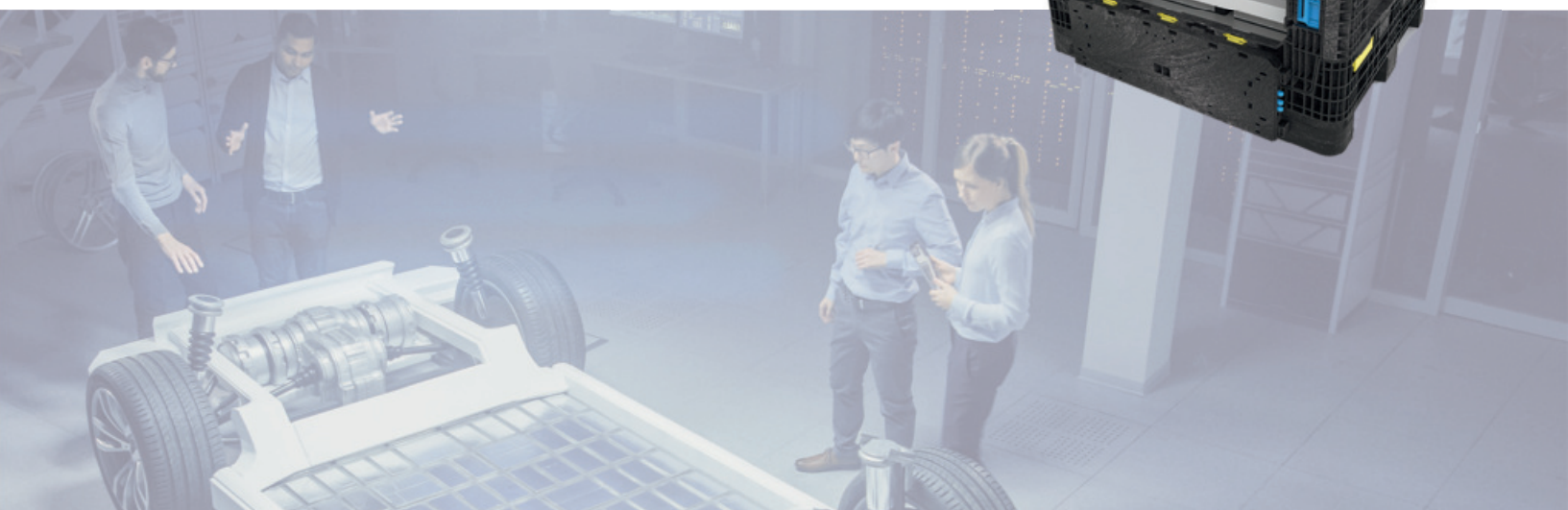
Model	1200 x 1000	1200 x 800
	HDB1210-980 R	HDB1208-960
Available Bottom Configuration	3 Runners	3 Runners
Outside Dimensions (L x W x H)	1200 x 1000 x 980	1200 x 800 x 960
Inside Dimensions (L x W x H)	1113 x 913 x 860	1120 x 720 x 805
Product Clearance	834	776
Collapsed Height	317	354
Weight (kg)	69	65

Available in different footprints upon request.

[Find more detailed information on page 29.](#)

What we can offer you:

- Customised solutions based on standard containers
- Solutions for multiple phases of the battery life cycle
- Qualified consulting and engineering expertise
- Comprehensive testing of the entire packaging
- UN-certification for solid dangerous goods
- Buyback option for obsolete containers



BULKPAK® FAMILY



The collapsible heavy-duty OceanPak® is designed for intercontinental shipments and offers an efficient footprint for optimized transportation in an ISO sea-container.

The plastic bulk bin can be collapsed when empty to **reduce storage costs**. A 40’ sea container can hold 60 fully assembled containers and 160 collapsed, empty units. In that way, intercontinental shipments and particularly the return transport can be optimized. Using **reusable and recyclable** plastic bins helps reduce disposal costs and increase sustainability in international supply chains.

OceanPak® Overview

- Suitable footprint for oversea containers
- Weight capacity of 900 kg
- Collapsible to reduce shipping cost
- Ideal for long distance sea freight transportation
- No waste disposal costs

Specifications (All dimensions in mm, unless otherwise indicated)

Model	HDI 119114-84 (Full Stringer)
Outside Dimensions (L x W x H)	1190 x 1135 x 840
Inside Dimensions (L x W)	1120 x 1065
Product Clearance	655
Collapsed Height	330
Container Capacity (kg)	900
Weight (kg)	47

Find more detailed information on page 26.





HDR3230-34

HDR3230-25

The heavy-duty 32" x 30" reusable containers are ideal for metal stampings and other heavy, dense components.

With a weight capacity of 900 kg, these FLCs are built for **long-lasting durability** in heavy-duty applications. The containers collapse when empty for reduced return transportation costs and **warehouse space savings**. Palletboxes offer the strength and rugged durability demanded in today's material handling and distribution systems.

HDR3230 Overview

- Ideal footprint for logistics and automated systems
- Standard American footprint
- Weight capacity of 900 kg
- Stackable to reduce shipping cost
- Easy to clean, rust-free, preventing metal-on-metal part damage with all plastic design
- Multiple access door configurations
- Multiple bottom configurations

Specifications (All dimensions in mm, unless otherwise indicated)

Model	HDR3230-25 NV	HDR3230-34 NV
Outside Dimensions (L x W x H)	813 x 762 x 635	813 x 762 x 864
Inside Dimensions (L x W)	742 x 693	743 x 693
Product Clearance	465	694
Collapsed Height	335	335
Container Capacity (kg)	900	900
Weight (kg)	29	37

Find more detailed information on page 31.

XXLPak

Extended Length Container



The heavy-duty containers in extended length can hold even heavy and extremely long parts.

ORBIS Europe offers a diverse family of **heavy-duty inch containers** for rugged industrial and automotive applications. The collapsible heavy-duty containers are designed for extremely long and hard-to-fit parts. All bulk bins in **extended length** are manufactured from high-density polyethylene using a structural foam-molding process for increased durability.

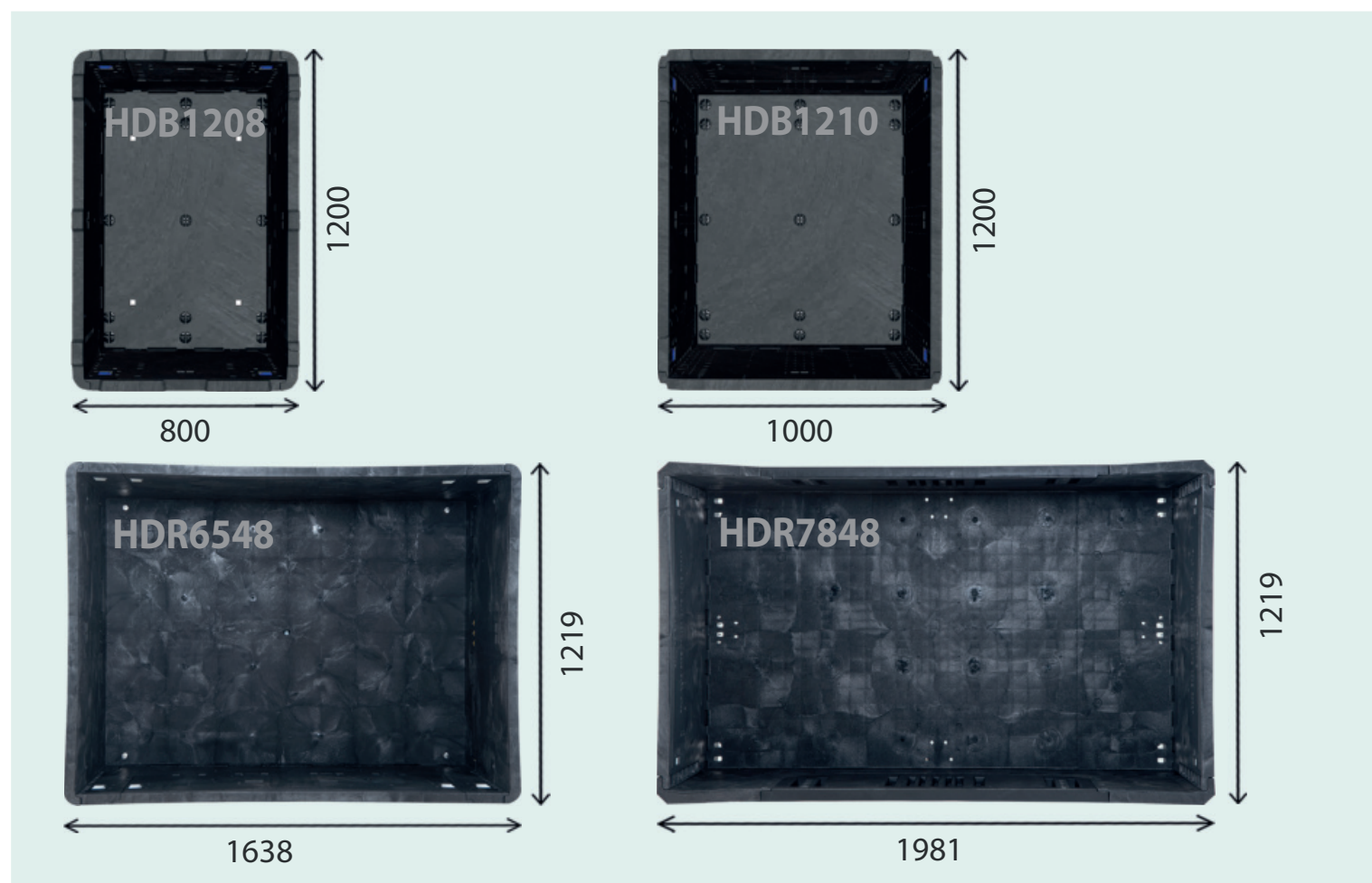
These robust containers are designed for a **long service life**. From extended length collapsible designs to American standard dimensions, ORBIS' XXLPaks are ideal for handling, storing and transporting parts along the supply chain.

Overview

- Standard inch footprints (e.g. 56" x 48" / 65" x 48" / 78" x 48")
- Recyclable, durable all-plastic design
- Preventing metal-on-metal part damage
- Ideal size for logistics and automated systems
- Weight capacity of up to 900 kg
- Easy to handle, easy to clean, rust-free
- Stackable to reduce shipping costs
- Multiple access door and bottom configurations
- Multiple identification options available

COMPATIBILITY WITH EUROPEAN FOOTPRINTS

The XXLPak extended length containers are designed according to American footprints and compatible with European standard footprints. The HDR6548 is twice the size of the HDB1208, while the HDR7808 is twice the size of the HDB1210. The different models are therefore compatible with existing supply chains.



Specifications (All dimensions in mm, unless otherwise indicated)

Model	HDR5648-34 NV	HDR6548-25 NV	HDR6548-34 NV
Outside Dimensions (L x W x H)	1435 x 1219 x 879	1638 x 1219 x 650	1638 x 1219 x 879
Inside Dimensions (L x W)	1354 x 1138	1557 x 1138	1557 x 1138
Product Clearance	683	457	681
Collapsed Height	345	345	345
Container Capacity (kg)	900	900	900
Weight (kg)	89	82	98

Specifications (All dimensions in mm, unless otherwise indicated)

Model	HDR6548-50	HDR7048-34	HDR7848-34
Outside Dimensions (L x W x H)	1638 x 1219 x 1270	1778 x 1219 x 864	1981 x 1219 x 864
Inside Dimensions (L x W)	1557 x 1138	1687 x 1130	1892 x 1130
Product Clearance	1090	678	678
Collapsed Height	561	338	338
Container Capacity (kg)	900	675	675
Weight (kg)	113	103	104

Find more detailed information on page 30.

RETAIL SUPPLY CHAIN

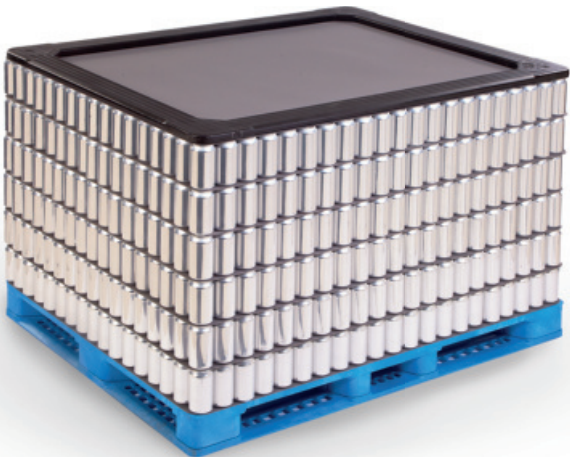


Reusable plastic products for every point
in the European retail supply chain

ORBIS pallets **protect beverage cans, bottles and other retail goods** during processing, storage and distribution applications throughout the manufacturing supply chain. Progressive industries and world-class companies have already converted **from wood pallets to ORBIS plastic pallets** for the work-in process, storage and distribution applications. They quickly recognized the **economic, ergonomic and environmental benefits** of plastic pallets.



Combine reusable plastic pallets, layer pads and top frames
to drive efficiency in the European food and beverage supply chain.



Contact your sales representative to learn more about ORBIS’ entire portfolio of packaging solutions for the retail supply chain.

RETURNABLE PLASTIC PALLETS

Plastic pallets are **easy to clean** and have a non-porous, smooth surface. That reduces the risk of dust and wood contamination in warehouses and on the production line. Our reusable pallets make a tremendous number of trips before being recycled, so they represent **great savings** over wood pallets on a cost-per-trip basis. Plastic pallets are **100% recyclable** and can be turned back into new pallets staying within a closed ecological circuit. They retain their material value, even at the end of their operational lives.

 Tapered 4-way entry

 Reusable, Returnable, Recyclable

 Safe and comfortable handling

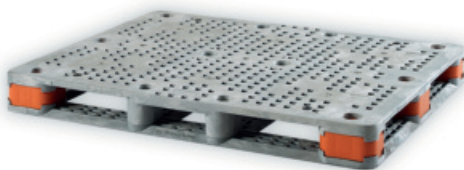
 Available with top frames & layer pads

 FDA-compliant material

 Reduction of repackaging costs

CAN END PALLET 1200 x 1000

- Compatible with palletizers, conveyors and automatic systems
- Patented snap-fit design



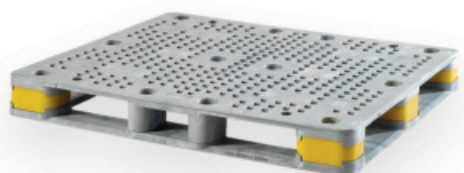
SPANISH PALLET 1120 x 1420

- Patented snap-fit design for on-site repair
- Available in two heights
- New version coming soon



GERMAN PALLET 1180 x 1265

- Increased deck ventilation for automated and manual washing systems
- Two-piece snap-fit design



UK PALLET 1120 x 1300

- Patented snap-fit design
- With recessed area for bar coding

Find more detailed information on page 32.

LAYER PADS

Reusable plastic divider sheets are placed between layers of aluminum, steel, glass and plastic cans or bottles used to package food and beverage products. Solid and corrugated layer pads provide **maximum product protection** and **unit load stability** while offering **increased hygienic properties** vs. one-way layer pads.

- Available in solid and corrugated styles
- Sheet thicknesses range from 0.64 mm - 5 mm
- Non-sloughing, plastic design reduces product contamination
- Reusable, easily cleanable
- Customer name and logo available for direct printing
- Reduces packaging waste by eliminating fiber sheet disposal
- 100% recyclable divider sheets



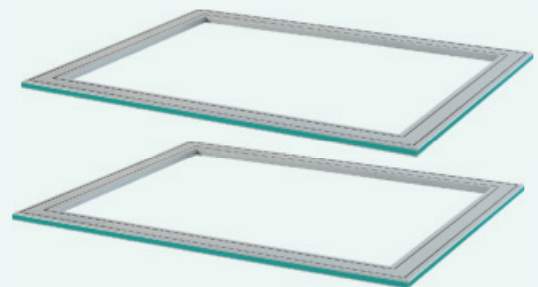
TYPICAL SHEET SIZES (in mm):

1000 x 1200 / 1120 x 1300 / 1120 x 1420 / 1150 x 1250 / 1180 x 1250 / 1200 x 1350

TOP FRAMES

Top Frames are designed to **stabilize and protect** bulk beverage products such as aluminum and steel cans, glass and plastic bottles, and other rigid packaging. When combined with plastic pallets and plastic divider sheets/layer pads, the top frames **secure and protect loads of product during transportation and storage**.

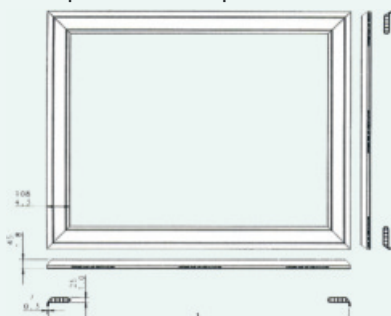
- Smooth, all plastic construction protects product
- Different top frame designs available (e.g. with lip)
- Suitable for automatic palletizers and depalletizers
- Washable and weather resistant
- Flexible custom sizes
- 100% recyclable with no metal inserts



TYPICAL FRAME SIZES (in mm):

1000 x 1200 / 1120 x 1300 / 1120 x 1420 / 1150 x 1250 / 1180 x 1250 / 1200 x 1350

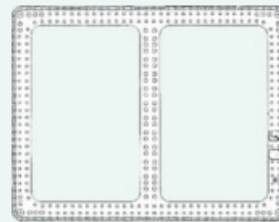
Top frame with lips - extruded



No Center Stringer



Single Center Stringer





FOLDABLE LARGE CONTAINERS

GITTERPAK	Page 26
OCEANPAK	Page 26
HDB1210	Page 27
IONPAK	Page 29
XXLPAK	Page 30
HDR3230	Page 31
PALLETS	Page 32



PRODUCT SPECIFICATIONS

Foldable Large Containers (FLCs)

GitterPak®

See page 12



Specifications (All dimensions in mm, unless otherwise indicated)

Model		HDB1208-960	
Outside Dimensions (L x W x H)		1200 x 800 x 960	
Inside Dimensions (L x W x H)		1120 x 720 x 805	
Product Clearance		776	
Collapsed Height		354	
Container Capacity (kg)		900	
Internal Volume to fill line (liters)		625	
Weight (kg)		65	
Maximum Loaded Stack	Static	1 + 5	
	Dynamic	1 + 2	
Return Ratio		1 : 2,7	
Access Door Openings	Height	Long Side	465
		Short Side	465
	Width	Long Side	900
		Short Side	420
Fork Openings	Height	Long Side	79
		Short Side	102
	Width	Long Side	290
		Short Side	224
40' Container Quantities (w/o covers)	Collapsed	175	
	Assembled	50	
3m Truckload Quantities (w/o covers)	Collapsed	272	
	Assembled	102	

Specifications (All dimensions in mm, unless otherwise indicated)

Compatible Top Cap		CHDB1208 Top
Manufacturing Process		High Pressure
Material		HDPE
Outside Dimensions (L x W x H)		1225 x 825 x 51
Weight (kg)		5.4

Specifications (All dimensions in mm, unless otherwise indicated)

Model		HDB1208-960
Standard Trailer (240 cm Height)	Collapsed	231
	Collapsed w/ top cap	1320
	Top Cap CHDB1208	231
Mega Trailer (*300cm)	Collapsed	264
	Collapsed w/ top cap	1320
	Top Cap CHDB1208	264
Jumbo Trailer (*300cm)	Collapsed	304
	Collapsed w/ top cap	1520
	Top Cap CHDB1208	304

OceanPak®

See page 18



Specifications (All dimensions in mm, unless otherwise indicated)

Model		HDI 119114-84 (Full Stringer)	
Outside Dimensions (L x W x H)		1190 x 1135 x 840	
Inside Dimensions (L x W)		1120 x 1065	
Product Clearance		655	
Collapsed Height		330	
Container Capacity (kg)		900	
Internal Volume to fill line (liters)		773	
Weight (kg)		47	
Maximum Loaded Stack	Static	1 + 5	
	Dynamic	1 + 2	
Return Ratio		1 : 2,5	
Access Door Openings	Height	Long Side	404
	Width	Long Side	799
Fork Openings	Height	Long Side	100
		Short Side	100
	Width	Long Side	260
		Short Side	276
20' Container Quantities (w/o covers)	Collapsed	63	
	Assembled	18	
40' Container Quantities (w/o covers)	Collapsed	160	
	Assembled	60	
3m Truckload Quantities (w/o covers)	Collapsed	196	
	Assembled	66	

HDB1210

See page 14



Specifications [All dimensions in mm, unless otherwise indicated]

Model		1200 x 1000 x 600/582		1200 x 1000 x 750/732	
		HDB1210-600 STR	HDB1210-582 R	HDB1210-750 STR	HDB1210-732 R
Available Bottom Configuration		Full Stringer	3 Runners	Full Stringer	3 Runners
Outside Dimensions (L x W x H)		1200 x 1000 x 600	1200 x 1000 x 582	1200 x 1000 x 750	1200 x 1000 x 732
Inside Dimensions (L x W x H)		1113 x 913 x 462	1113 x 913 x 462	913 x 1113 x 612	913 x 1113 x 612
Product Clearance		434	434	585	585
Collapsed Height		335	317	335	317
Nested Height		317	299	317	299
Container Capacity (kg)		900	900	900	900
Internal Volume to fill line (liters)		441	441	594	594
Weight (kg)		54	51	61	57
Fork Strap Thickness		18	18 (long side)	18	18 (long side)
Fork Tunnel Dimensions (W x H)	1000 Side	288 x 90	288 x 90	288 x 90	288 x 90
	1200 Side	288 x 90	289 x 72	288 x 90	289 x 72
Access Door Dimensions (W x H)	1000 Side	N/A	N/A	754 x 349	754 x 349
	1200 Side	820 x 274	820 x 274	820 x 349	820 x 349
Maximum Loaded Stack	Static	1 + 5	1 + 5	1 + 5	1 + 5
	Dynamic	1 + 3	1 + 3	1 + 3	1 + 3

Specifications [All dimensions in mm, unless otherwise indicated]

Model		1200 x 1000 x 888/870		1200 x 1000 x 998/980	
		HDB1210-888 STR	HDB1210-870 R	HDB1210-998 STR	HDB1210-980 R
Available Bottom Configuration		Full Stringer	3 Runners	Full Stringer	3 Runners
Outside Dimensions (L x W x H)		1200 x 1000 x 888	1200 x 1000 x 870	1200 x 1000 x 998	1200 x 1000 x 980
Inside Dimensions (L x W x H)		1113 x 913 x 750	1113 x 913 x 750	1113 x 913 x 860	1113 x 913 x 860
Product Clearance		723	723	834	834
Collapsed Height		335	317	335	317
Nested Height		317	299	317	299
Container Capacity (kg)		900	900	900	900
Internal Volume to fill line (liters)		735	735	847	847
Weight (kg)		68	64	73	69
Fork Strap Thickness		18	18 (long side)	18	18 (long side)
Fork Tunnel Dimensions (W x H)	1000 Side	288 x 90	288 x 90	288 x 90	288 x 90
	1200 Side	288 x 90	289 x 72	288 x 90	289 x 72
Access Door Dimensions (W x H)	1000 Side	754 x 418	754 x 418	754 x 473	754 x 473
	1200 Side	820 x 418	820 x 418	820 x 473	820 x 473
Maximum Loaded Stack	Static	1 + 5	1 + 5	1 + 5	1 + 5
	Dynamic	1 + 2	1 + 2	1 + 2	1 + 2

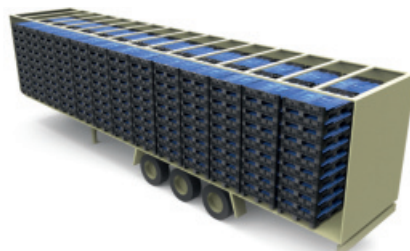
Specifications [All dimensions in mm, unless otherwise indicated]

Compatible Top Cap	CHDB1210 Top Cap
Manufacturing Process	High Pressure
Material	HDPE
Outside Dimensions (L x W x H)	1213 x 1013 x 52
Inside Dimensions (L x W)	1207 x 1007
Weight (kg)	5,75

PRODUCT SPECIFICATIONS

HDB1210

See page 14



Shipping Specifications

Specifications (All dimensions in mm, unless otherwise indicated)

Model		1200 x 1000 x 600/582		1200 x 1000 x 750/732	
		HDB1210-600 STR	HDB1210-582 R	HDB1210-750 STR	HDB1210-732 R
Available Bottom Configuration		Full Stringer	3 Runners	Full Stringer	3 Runners
Truckload Capacities (3m Trailer)	Collapsed	234	234	234	234
	Collapsed w/ top cap	234	234	234	234
	Assembled	130	130	104	104
	Assembled w/ top cap	140	130	78	104
Sea Container (40' HC)	Collapsed	168	168	168	168
	Collapsed w/ top cap	147	168	147	168
	Assembled	84	84	63	63
	Assembled w/ top cap	84	84	63	63

Specifications (All dimensions in mm, unless otherwise indicated)

Model		1200 x 1000 x 888/870		1200 x 1000 x 998/980	
		HDB1210-888 STR	HDB1210-870 R	HDB1210-998 STR	HDB1210-980 R
Available Bottom Configuration		Full Stringer	3 Runners	Full Stringer	3 Runners
Truckload Capacities (3m Trailer)	Collapsed	234	234	234	234
	Collapsed w/ top cap	234	234	234	234
	Assembled	78	78	78	78
	Assembled w/ top cap	78	78	52	78
Sea Container (40' HC)	Collapsed	168	168	168	168
	Collapsed w/ top cap	147	168	147	168
	Assembled	42	42	42	42
	Assembled w/ top cap	42	42	42	42

Specifications (All dimensions in mm, unless otherwise indicated)

3m - Mega Trailer	Internal Dimension (m): 13,60 x 2,45 x 3 Weight limit: 24.000 kg	ORBIS BULPAK	STEEL STILLAGE
		HDB1210-980	1200 x 1000 x 1000
Return Freight Comparison	Quantity of Containers per Trailer	78	78
	Quantity of Returned Containers per Trailer	234	78
	Return Ratio	3 : 1	1 : 1
Weight Comparison	Total Packaging Tare Weight (kg)	5.382 kg	11.700 kg
	Maximum Packaged Product Weight (kg)	18.618 kg	12.300 kg

PRODUCT SPECIFICATIONS

IonPak®

See page 16



Specifications (All dimensions in mm, unless otherwise indicated)

Model		1200 x 1000 x 600/582		1200 x 1000 x 998/980	
		HDB1210-600 STR	HDB1210-582 R	HDB1210-998 STR	HDB1210-980 R
Available Bottom Configuration		Full Stringer	3 Runners	Full Stringer	3 Runners
Outside Dimensions (L x W x H)		1200 x 1000 x 600	1200 x 1000 x 582	1200 x 1000 x 998	1200 x 1000 x 980
Inside Dimensions (L x W x H)		1113 x 913 x 462	1113 x 913 x 462	1113 x 913 x 860	1113 x 913 x 860
Product Clearance		434	434	834	834
Collapsed Height		335	317	335	317
Container Capacity (kg)		400	400	400	400
Internal Volume to fill line (liters)		441	441	847	847
Weight (kg)		54	51	73	69
40' Container Quantities (w/o covers)	Collapsed	168	168	168	168
	Assembled	84	84	42	42
3m Truckload Quantities (w/o covers)	Collapsed	234	234	234	234
	Assembled	130	130	78	78
Maximum Loaded Stack	Static	1 + 5	1 + 5	1 + 5	1 + 5
	Dynamic	1 + 3	1 + 3	1 + 2	1 + 2

Specifications (All dimensions in mm, unless otherwise indicated)

Compatible Top Cap	CHDB1210 Top Cap
Manufacturing Process	High Pressure
Material	HDPE
Outside Dimensions (L x W x H)	1213 x 1013 x 52
Inside Dimensions (L x W)	1207 x 1007
Weight (kg)	5,75

Specifications (All dimensions in mm, unless otherwise indicated)

Model		1200 x 800 x 960
		HDB1208-960
Available Bottom Configuration		3 Runners
Outside Dimensions (L x W x H)		1200 x 800 x 960
Inside Dimensions (L x W x H)		1120 x 720 x 805
Product Clearance		776
Collapsed Height		354
Container Capacity (kg)		400
Internal Volume to fill line (liters)		625
Weight (kg)		65
40' Container Quantities (w/o covers)	Collapsed	175
	Assembled	50
3m Truckload Quantities (w/o covers)	Collapsed	272
	Assembled	102
Maximum Loaded Stack	Static	1 + 5
	Dynamic	1 + 2

Specifications (All dimensions in mm, unless otherwise indicated)

Compatible Top Cap	CHDB1208 Top
Manufacturing Process	High Pressure
Material	HDPE
Outside Dimensions (L x W x H)	1225 x 825 x 51
Weight (kg)	5,4

Additional dimensions available upon request.

PRODUCT SPECIFICATIONS

XXLPak / Extended Length

See page 20



Specifications (All dimensions in mm, unless otherwise indicated)

Model			HDR5648-34 NV	HDR6548-25 NV	HDR6548-34 NV
Outside Dimensions (L x W x H)			1435 x 1219 x 879	1638 x 1219 x 650	1638 x 1219 x 879
Inside Dimensions (L x W)			1354 x 1138	1557 x 1138	1557 x 1138
Product Clearance			683	457	681
Collapsed Height			345	345	345
Container Capacity (kg)			900	900	900
Internal Volume to fill line (liters)			1052	810	1206
Weight (kg)			89	82	98
Maximum Loaded Stack	Static		1 + 2	1 + 4	1 + 4
	Dynamic		1 + 2	1 + 3	1 + 2
Return Ratio			1 : 2,6	1 : 1,9	1 : 2,6
Access Door Openings	Height	Long Side	437	310	437
		Short side	437	229	437
	Width	Long Side	1036	1278	1240
		Short Side	777	823	777
Fork Openings	Height	Long Side	89	89	89
		Short Side	89	89	89
	Width	Long Side	325	274	274
		Short Side	325	274	274
40' Container Quantities (w/o covers)	Collapsed		72	72	72
	Assembled		27	36	27
3m Truckload Quantities (w/o covers)	Collapsed		162	144	144
	Assembled		54	64	48

Specifications (All dimensions in mm, unless otherwise indicated)

Model			HDR6548-50	HDR7048-34	HDR7848-34
Outside Dimensions (L x W x H)			1638 x 1219 x 1270	1778 x 1219 x 864	1981 x 1219 x 864
Inside Dimensions (L x W)			1557 x 1138	1687 x 1130	1892 x 1130
Product Clearance			1090	678	678
Collapsed Height			561	338	338
Container Capacity (kg)			900	675	675
Internal Volume to fill line (liters)			1931	1293	1451
Weight (kg)			113	103	104
Maximum Loaded Stack	Static		1 + 3	1 + 3	1 + 3
	Dynamic		1 + 1	1 + 2	1 + 2
Return Ratio			1 : 2,3	1 : 2,6	1 : 2,6
Access Door Openings	Height	Long Side	620	424	428
		Short side	391	428	428
	Width	Long Side	1278	1161	1161
		Short Side	823	838	838
Fork Openings	Height	Long Side	89	89	89
		Short Side	89	89	89
	Width	Long Side	274	302	302
		Short Side	274	302	302
40' Container Quantities (w/o covers)	Collapsed		36	72	72
	Assembled		18	27	27
3m Truckload Quantities (w/o covers)	Collapsed		80	126	108
	Assembled		32	42	36

HDR 32" x 30"

See page 19



Specifications (All dimensions in mm, unless otherwise indicated)

Model			HDR3230-25 NV	HDR3230-34 NV
Outside Dimensions (L x W x H)			813 x 762 x 635	813 x 762 x 864
Inside Dimensions (L x W)			742 x 693	743 x 693
Product Clearance			465	694
Container Capacity (kg)			900	900
Collapsed Height			335	335
Internal Volume to fill line (liters)			240	358
Weight (kg)			29.0	37
Maximum Loaded Stack	Static		1 + 5	1 + 5
	Dynamic		1 + 3	1 + 2
Return Ratio			1 : 1,9	1 : 2,6
Access Door Openings	Height	Long Side	287	399
	Width	Long Side	457	457
Fork Openings	Height	Long Side	87	87
		Short Side	57	57
	Width	Long Side	260	260
		Short Side	181	181
40' Container Quantities (w/o covers)	Collapsed		336	336
	Assembled		168	126
3m Truckload Quantities (w/o covers)	Collapsed		432	432
	Assembled		192	144

Cover	CHDR3230
Outside Dimensions (L x W x H)	838 x 787 x 76
Inside Dimensions (L x W)	775 x 823
Product Clearance	43
Weight (kg)	4.6

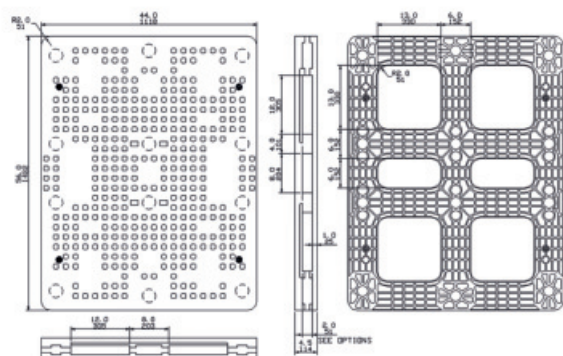
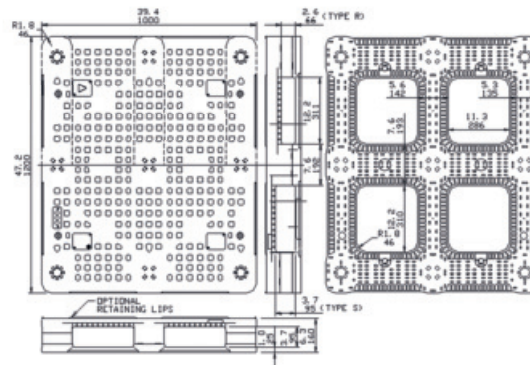
PRODUCT SPECIFICATIONS

Plastic Pallets

Can End Pallet 1200 x 1000

See page 23

Dimensions (mm):	1200 x 1000 x 160
Weight:	24 kg
Load Capacity, stat.:	10.000 kg
Load Capacity, dyn.:	1.250 kg



Spanish Pallet 1120 x 1420

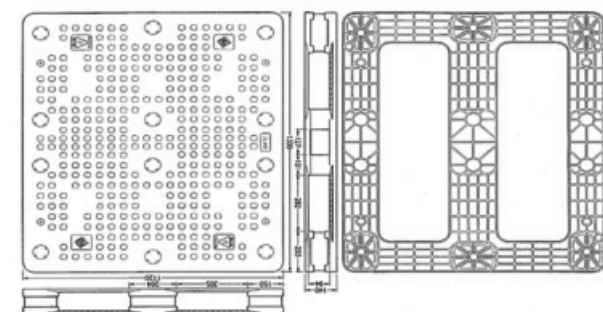
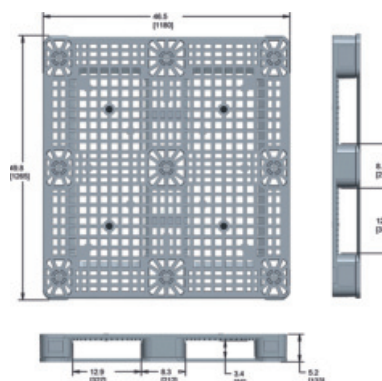
See page 23

Dimensions (mm):	1120 x 1420 x 140	1120 x 1420 x 114
Weight:	27 kg	25 kg
Load Capacity, stat.:	10.000 kg	10.000 kg
Load Capacity, dyn.:	1.250 kg	1.250 kg

German Pallet 1180 x 1265

See page 23

Dimensions (mm):	1180 x 1265 x 133
Weight:	22,6 kg
Load Capacity, stat.:	10.000 kg
Load Capacity, dyn.:	1.250 kg



UK Pallet 1120 x 1300

See page 23

Dimensions (mm):	1120 x 1300 x 140
Weight:	22 kg
Load Capacity, stat.:	10.000 kg
Load Capacity, dyn.:	1.250 kg

PRODUCT INDEX

Model	Page
813 x 762 HDR3230	19
1190 x 1135 OceanPak®	18
1200 x 800 GitterPak®	12
1200 x 800 IonPak®	16
1200 x 1000 HDB1210	14
1200 x 1000 IonPak®	16
1435 x 1219 XXLPak	20
1638 x 1219 XXLPak	20
1778 x 1219 XXLPak	20
1981 x 1219 XXLPak	20
1120 x 1300 UK Pallet	23
1120 x 1420 Spanish Pallet	23
1180 x 1265 German Pallet	23
1200 x 1000 Can End Pallet	23
Layer Pads	24
Top Frames	24

ORBIS EUROPE LOCATIONS



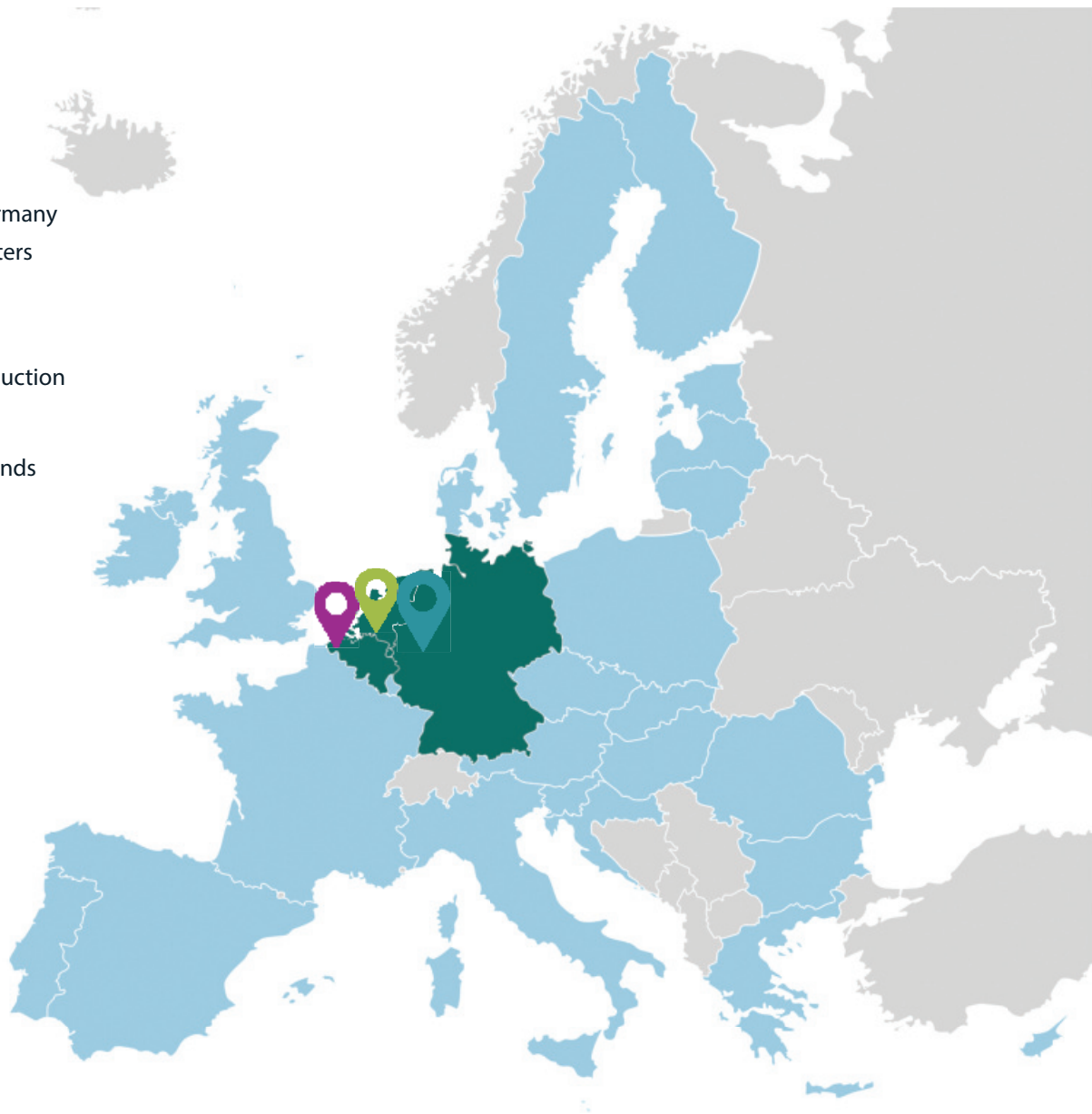
Hürth / Cologne, Germany
European Headquarters



Ypres, Belgium
Operations and Production



Eindhoven, Netherlands
RPM Service Center



ORBIS GmbH
An der Hasenkaule 10
Hürth 50354, Germany

www.orbiseurope.eu
europe@orbiscorporation.com

GET SOCIAL

Connect with us socially
and stay up-to-date on
the latest ORBIS happenings!



ORBIS Europe