



 Powered by Menasha Corporation

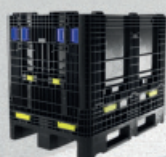
ORBIS EUROPE

PRODUCT CATALOG

INNOVATIVE PACKAGING SOLUTIONS
FOR A SUSTAINABLE FUTURE



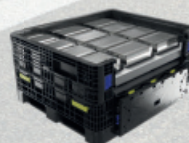
1200 x 800



1200 x 1000



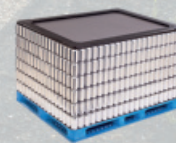
Dangerous Goods
Packaging



XXLPak



Pallet Systems



20
21



INNOVATIVE



DURABLE




SUSTAINABLE

www.orbiseurope.eu

europe@orbiscorporation.com

OVERVIEW FLCs



Foldable and stackable
with a weight capacity of 900 kg

The ORBIS Europe BulkPak® brand of foldable large containers (FLC) represents an **innovative alternative** to steel gitterboxes and one-way packaging that can be seamlessly integrated into most existing manual and automated supply chains. ORBIS manufactures a portfolio of FLCs **in Europe** using a special manufacturing process. We use **up to 90% recycled materials** which leads to a reduction of CO₂ emissions of 60-70 kg per container. The bulk bins are designed for a long service life in automotive and industrial applications and have a load capacity of **up to 900 kg**.

The BulkPak® FLCs stack securely when full and fold when empty for return trips for **improved truck utilisation** and **significant cost savings**. When collapsed during the return transport, a truck load holds **up to 3 times more** plastic containers compared to steel gitterboxes. At the end of a long service life, we offer to buy back obsolete containers and use the raw materials to produce new packaging products.

BENEFITS AND ADDED VALUES

- Long service life due to production process
- Robust wall design
- Fold-down-ratio of up to 1 : 3 for space savings
- Reducing the costs for return shipment
- Stackable when loaded: up to 1 + 5 static / 1 + 2 dynamic
- Weight capacity of up to 900 kg with low tare weight
- Buyback of obsolete containers
- Up to 100% recyclability of plastic raw materials





GitterPak®

Sustainable and efficient replacement for steel gitterboxes

1200 x 800

HIGHLIGHTS

1 : 1 Gitterbox replacement
Weight capacity of 900 kg



HDB1210

Designed to protect and transport parts in global automotive and industrial supply chains

1200 x 1000

HIGHLIGHTS

Automotive standard footprint
Weight capacity of 900 kg



IonPak® for Dangerous Goods

Plastic FLC for safe and efficient lithium-ion battery transportation

1200 x 800 / 1200 x 1000

HIGHLIGHTS

UN certification 4HS
Approval for up to 400 kg



OceanPak®

For intercontinental shipments and optimized transportation in an ISO sea-container

1190 x 1135

HIGHLIGHTS

Collapsible for return transport
Reduction of disposal costs



XXLPak in Extended Length

Heavy-duty FLCs in inch dimensions and extended length for rugged applications

HIGHLIGHTS

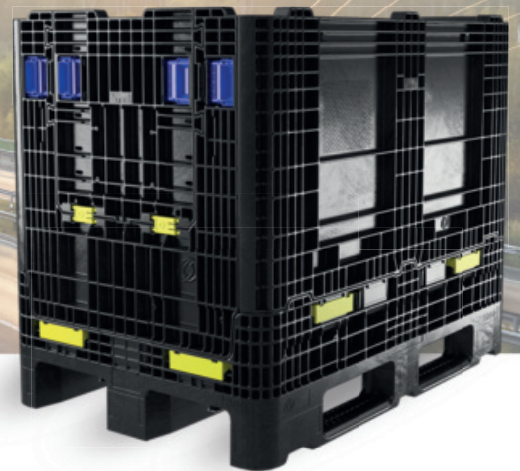
For long and hard-to-fit parts
Heavy-duty applications

FOLDABLE LARGE PLASTIC CONTAINERS

ORBIS Plastic FLCs are suitable for variable applications in automotive industry and industrial manufacturing and help increase sustainability and efficiency in the supply chain.

GitterPak®

1200 x 800



The durable and efficient packaging substitute for steel gitterboxes and other conventional packaging.

As part of the ORBIS line of FLCs, the GitterPak offers logistics advantages, warehouse cost-savings and increased sustainability in the supply chain. The GitterPak is collapsible so that one truck load holds up to 272 folded, empty plastic containers compared to 78 fully-assembled steel gitterboxes. With its all-plastic design, the industrial FLC features a light tare weight compared to metal bins, so trucks will efficiently cube out before weighing out.

GitterPak® Overview

- European standard 1200 x 800 footprint
- Weight capacity of 900 kg
- Collapsible to reduce shipping cost
- Ideal footprint for logistics and automated systems
- Easy to clean, rust-free, preventing metal-on-metal part damage with all plastic design
- Multiple access door configurations
- Multiple bottom configurations





Durable and robust



Improved security and ergonomics



Foldable 1:3 and stackable 1 + 5 (static)

Specifications (All dimensions in mm, unless otherwise indicated)

Model	HDB1208-960
Outside Dimensions (L x W x H)	1200 x 800 x 960
Inside Dimensions (L x W x H)	1120 x 720 x 805
Product Clearance	776
Collapsed Height	354
Container Capacity (kg)	900
Weight (kg)	65

Find more detailed information on page 26.



HDB1208-960 with top cap



HDB1208-960 with three runner base

BULKPAK® FAMILY

HDB1210

1200 x 1000

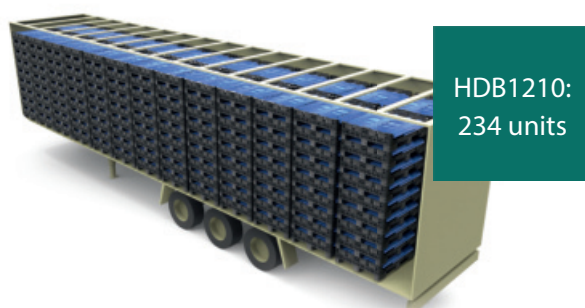


The collapsible heavy-duty HDB1210 is designed to protect and transport parts in global automotive and industrial applications.

Engineered for rugged, heavy-duty applications, the HDB1210 is robust and offers a long service life – leading to an **attractive ROI** and a **lower total cost of ownership**. Key features of the foldable large container (FLC) include multiple heights, access door and bottom configurations as well as enhanced maintenance features for easy, on-site repair and part replacement.

HDB1210 Overview

- Automotive and industrial standard footprint
- Weight capacity of 900 kg
- Collapsible to reduce shipping cost
- Ideal footprint for logistics and automated systems
- Easy to clean, rust-free
- Preventing metal-on-metal part damage with all plastic design
- Multiple heights
- Multiple access door configurations
- Multiple bottom configurations



Specifications (All dimensions in mm, unless otherwise indicated)

Model	1200 x 1000 x 600/582		1200 x 1000 x 998/980	
	HDB1210-600 STR	HDB1210-582 R	HDB1210-998 STR	HDB1210-980 R
Available Bottom Configuration	Full Stringer	3 Runners	Full Stringer	3 Runners
Outside Dimensions (L x W x H)	1200 x 1000 x 600	1200 x 1000 x 582	1200 x 1000 x 998	1200 x 1000 x 980
Inside Dimensions (L x W x H)	1113 x 913 x 462	1113 x 913 x 462	1113 x 913 x 860	1113 x 913 x 860
Product Clearance	434	434	834	834
Collapsed Height	335	317	335	317
Container Capacity (kg)	900	900	900	900
Weight (kg)	54	51	73	69

Find more detailed information on page 27.



Durable and robust

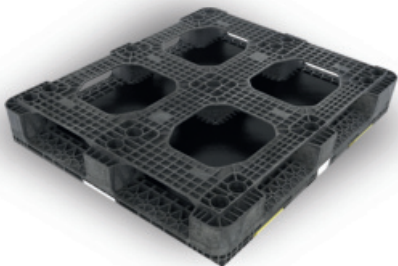


Improved security and ergonomics

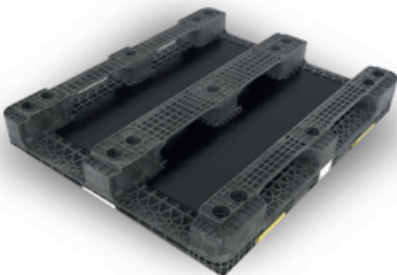


Foldable 1 : 3 and stackable 1 + 5 static / 1 + 2 dynamic

Bottom Configurations



Full Stringer (STR)



3 Runner (R)

BULKPAK® FAMILY

IonPak®

1200 x 800 / 1200 x 1000

The collapsible heavy-duty IonPak® is designed to transport solid dangerous goods, such as lithium-ion batteries, in a safe, damage-free and cost-efficient way.



The IonPak was launched as an efficient and safe solution for lithium-ion battery transport and is **UN-certified** to transport solid dangerous goods (4H2). With **standard footprints**, the collapsible heavy-duty container interfaces seamlessly with customers' existing supply chains. By using recycled and recyclable materials during production of the IonPak, CO2-emissions can be reduced by 60-75 kg per container, helping OEMs reach their emissions goals.

The reusable IonPak® is suitable for **solid dangerous goods**, such as battery cells, battery modules, prototypes and batteries in equipment. The transportation of airbags and belt tensioners is possible after successful completion of a bonfire test. **We are happy to advise on any other application.**



Qualified Consulting
by Certified
Dangerous Goods
Experts

IonPak® Overview

- ORBIS IonPak® is certified to transport solid dangerous goods (e.g. 4H2)
- Coverts conventional one-way packaging to a collapsible, reusable plastic container
- Customised protective dunnage for increased product protection
- Automotive industry standard footprints designed to interface with customers existing supply chain
- Increased return ratio and warehousing savings with a collapsible, stackable container design
- Eliminated risk of rust contamination and operator safety hazards
- Approval for weight capacity of up to 400 kg
- Eliminated packaging disposal by reusable, recyclable designs

Specifications (All dimensions in mm, unless otherwise indicated)

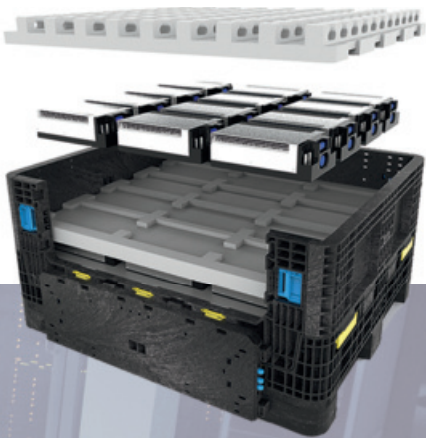
Model	1200 x 1000	1200 x 800
	HDB1210-980 R	HDB1208-960
Available Bottom Configuration	3 Runners	3 Runners
Outside Dimensions (L x W x H)	1200 x 1000 x 980	1200 x 800 x 960
Inside Dimensions (L x W x H)	1113 x 913 x 860	1120 x 720 x 805
Product Clearance	834	776
Collapsed Height	317	354
Weight (kg)	69	65

[Find more detailed information on page 29.](#)

Available in different footprints upon request.

What we can offer you:

- Customised solutions based on standard containers
- Solutions for multiple phases of the battery life cycle
- Qualified consulting and engineering expertise
- Comprehensive testing of the entire packaging
- UN-certification for solid dangerous goods
- Buyback option for obsolete containers



BULKPAK® FAMILY



The collapsible heavy-duty OceanPak® is designed for intercontinental shipments and offers an efficient footprint for optimized transportation in an ISO sea-container.

The plastic bulk bin can be collapsed when empty to **reduce storage costs**. A 40’ sea container can hold 60 fully assembled containers and 160 collapsed, empty units. In that way, intercontinental shipments and particularly the return transport can be optimized. Using **reusable and recyclable** plastic bins helps reduce disposal costs and increase sustainability in international supply chains.

OceanPak® Overview

- Suitable footprint for oversea containers
- Weight capacity of 900 kg
- Collapsible to reduce shipping cost
- Ideal for long distance sea freight transportation
- No waste disposal costs

Specifications (All dimensions in mm, unless otherwise indicated)

Model	HDI 119114-84 (Full Stringer)
Outside Dimensions (L x W x H)	1190 x 1135 x 840
Inside Dimensions (L x W)	1120 x 1065
Product Clearance	655
Collapsed Height	330
Container Capacity (kg)	900
Weight (kg)	47

Find more detailed information on page 26.





HDR 32" x 30"

812 x 762



The heavy-duty 32" x 30" reusable containers are ideal for metal stampings and other heavy, dense components.

With a weight capacity of 900 kg, these FLCs are built for **long-lasting durability** in heavy-duty applications. The containers collapse when empty for reduced return transportation costs and **warehouse space savings**. Palletboxes offer the strength and rugged durability demanded in todays material handling and distribution systems.

HDR3230 Overview

- Ideal footprint for logistics and automated systems
- Standard American footprint
- Weight capacity of 900 kg
- Stackable to reduce shipping cost
- Easy to clean, rust-free, preventing metal-on-metal part damage with all plastic design
- Multiple access door configurations
- Multiple bottom configurations

Specifications (All dimensions in mm, unless otherwise indicated)

Model	HDR3230-25 NV	HDR3230-34 NV
Outside Dimensions (L x W x H)	813 x 762 x 635	813 x 762 x 864
Inside Dimensions (L x W)	742 x 693	743 x 693
Product Clearance	465	694
Collapsed Height	335	335
Container Capacity (kg)	900	900
Weight (kg)	29	37

[Find more detailed information on page 31.](#)

XXLPak

Extended Length Container



The heavy-duty containers in extended length can hold even heavy and extremely long parts.

ORBIS Europe offers a diverse family of **heavy-duty inch containers** for rugged industrial and automotive applications. The collapsible heavy-duty containers are designed for extremely long and hard-to-fit parts. All bulk bins in **extended length** are manufactured from high-density polyethylene using a structural foam-molding process for increased durability.

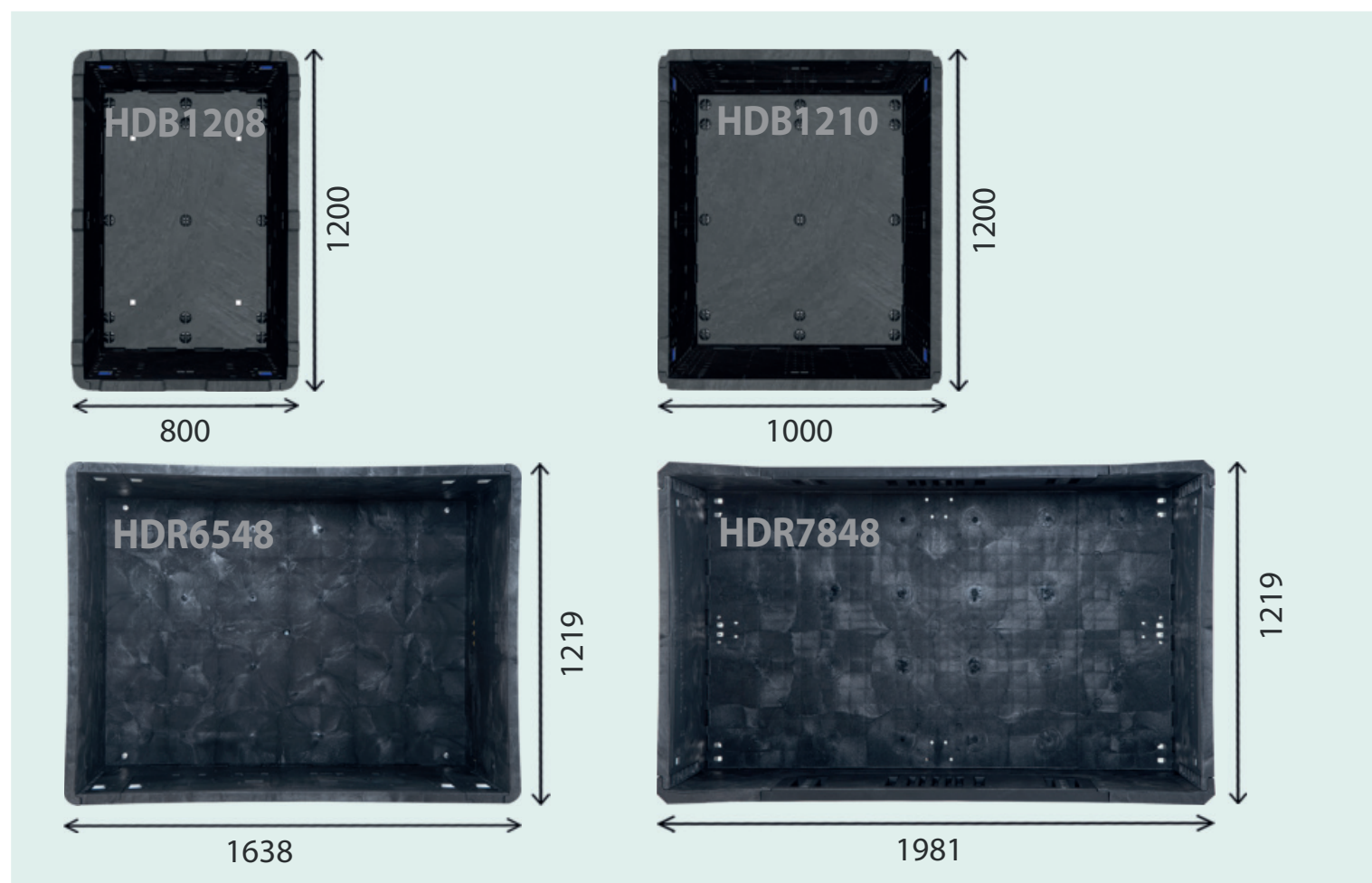
These robust containers are designed for a **long service life**. From extended length collapsible designs to American standard dimensions, ORBIS' XXLPaks are ideal for handling, storing and transporting parts along the supply chain.

Overview

- Standard inch footprints (e.g. 56" x 48" / 65" x 48" / 78" x 48")
- Recyclable, durable all-plastic design
- Preventing metal-on-metal part damage
- Ideal size for logistics and automated systems
- Weight capacity of up to 900 kg
- Easy to handle, easy to clean, rust-free
- Stackable to reduce shipping costs
- Multiple access door and bottom configurations
- Multiple identification options available

COMPATIBILITY WITH EUROPEAN FOOTPRINTS

The XXLPak extended length containers are designed according to American footprints and compatible with European standard footprints. The HDR6548 is twice the size of the HDB1208, while the HDR7808 is twice the size of the HDB1210. The different models are therefore compatible with existing supply chains.



Specifications (All dimensions in mm, unless otherwise indicated)

Model	HDR5648-34 NV	HDR6548-25 NV	HDR6548-34 NV
Outside Dimensions (L x W x H)	1435 x 1219 x 879	1638 x 1219 x 650	1638 x 1219 x 879
Inside Dimensions (L x W)	1354 x 1138	1557 x 1138	1557 x 1138
Product Clearance	683	457	681
Collapsed Height	345	345	345
Container Capacity (kg)	900	900	900
Weight (kg)	89	82	98

Specifications (All dimensions in mm, unless otherwise indicated)

Model	HDR6548-50	HDR7048-34	HDR7848-34
Outside Dimensions (L x W x H)	1638 x 1219 x 1270	1778 x 1219 x 864	1981 x 1219 x 864
Inside Dimensions (L x W)	1557 x 1138	1687 x 1130	1892 x 1130
Product Clearance	1090	678	678
Collapsed Height	561	338	338
Container Capacity (kg)	900	675	675
Weight (kg)	113	103	104

Find more detailed information on page 30.

ORBIS EUROPE LOCATIONS



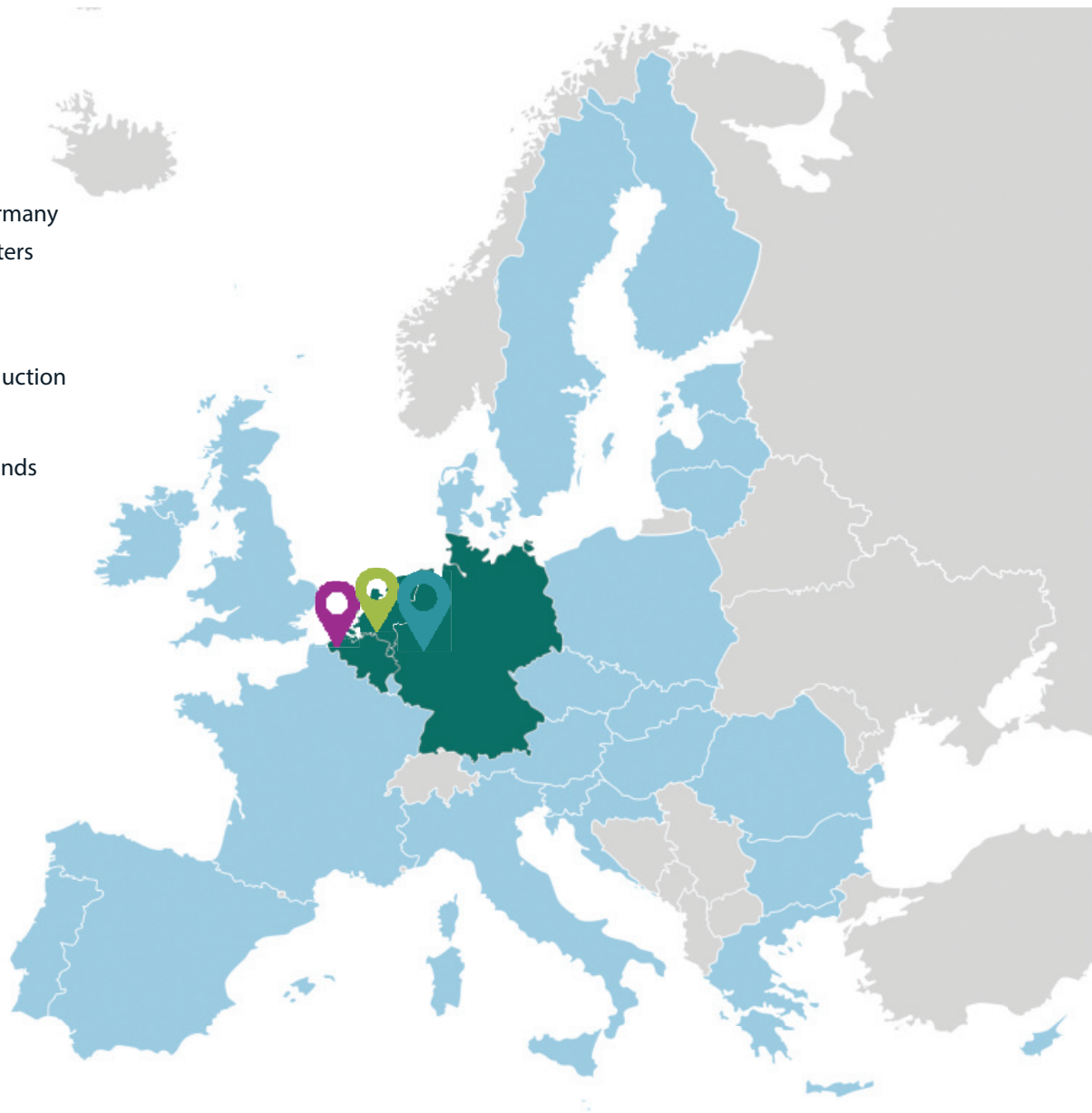
Hürth / Cologne, Germany
European Headquarters



Ypres, Belgium
Operations and Production



Eindhoven, Netherlands
RPM Service Center



ORBIS GmbH
An der Hasenkaule 10
Hürth 50354, Germany

www.orbiseurope.eu
europe@orbiscorporation.com

GET SOCIAL

Connect with us socially
and stay up-to-date on
the latest ORBIS happenings!



ORBIS Europe