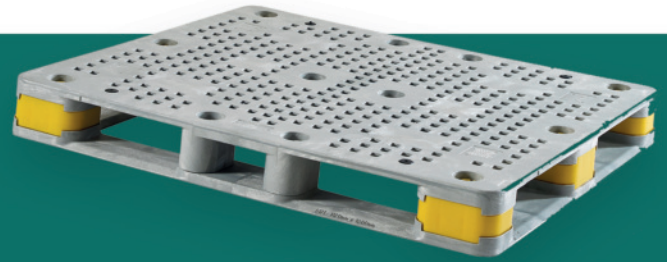


PRODUCT SPECIFICATIONS



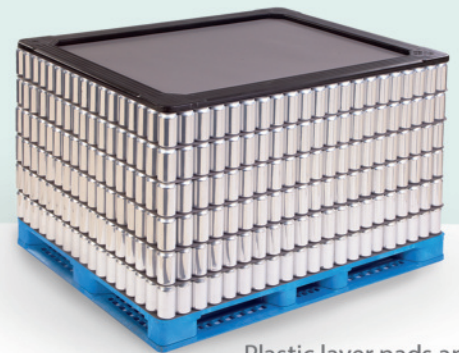
UK Pallet 1120 x 1300

Total system solutions for the food & beverage industry

With a 1120 x 1300 mm footprint, the UK pallet offers workplace safety, superior cleanliness, increased performance and sustainability in the supply chain. The plastic pallet is designed to securely move pallet loads in food and beverage industries.

Overview

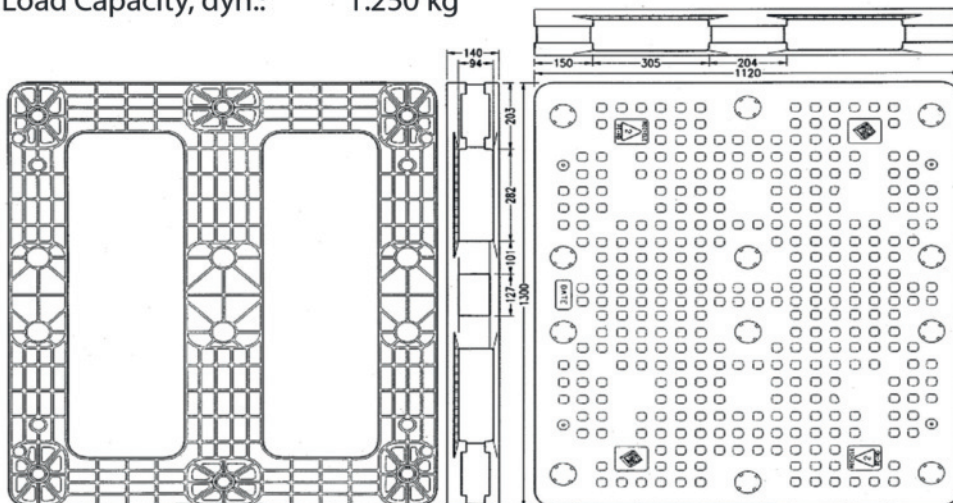
- Designed to convey beverage products, aluminum and steel cans, glass and plastic bottles, can ends and other rigid packages on many palletizers and conveyor systems
- The sustainable, efficient and safe alternative to wooden pallets
- Patented snap-fit design
- Available in FDA approved material
- Tapered 4-way entry
- Recessed area for bar coding



Plastic layer pads and top frames available

UK Pallet Product Specifications

Dimensions (mm):	1120 x 1300 x 140
Weight:	23 kg
Load Capacity, stat.:	10.000 kg
Load Capacity, dyn.:	1.250 kg



OPTIONS:

- Bar coding
- Hot stamp
- Molded-in logo
- Grommets
- Custom colours