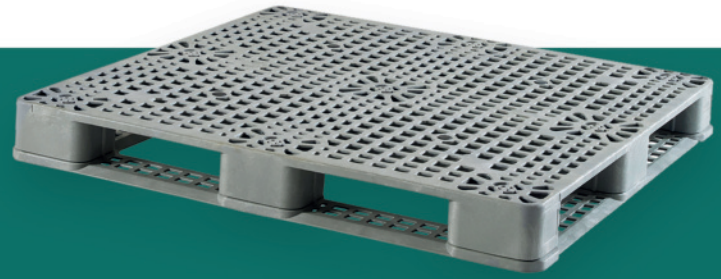


PRODUCT SPECIFICATIONS



German Pallet 1180 x 1265

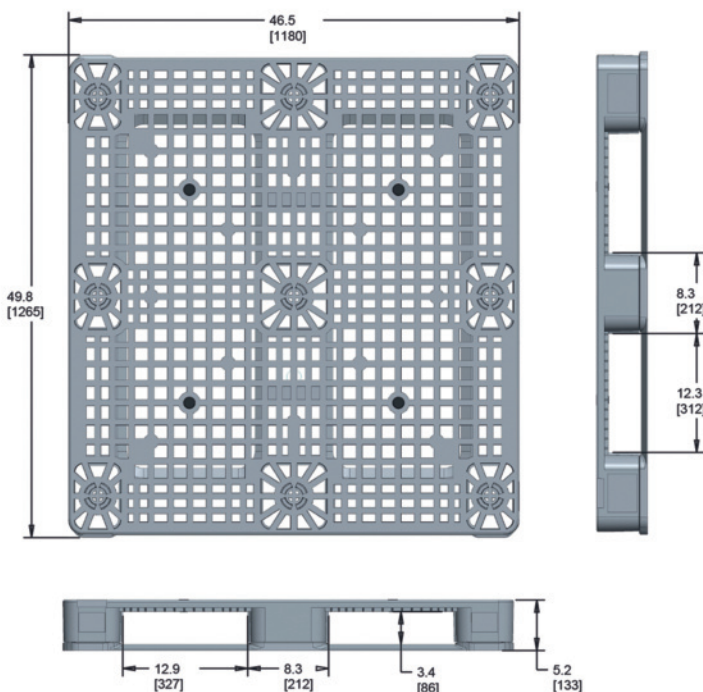
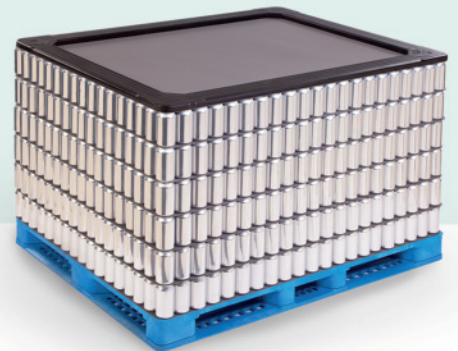
Total system solutions for the food & beverage industry

The German pallet with a 1180 x 1265 mm footprint efficiently transports cans and bottles in the food and beverage industry. With increased deck ventilation, the plastic pallet is ideal for automated and manual washing systems.

Overview

- Designed to convey beverage products, aluminum and steel cans, glass and plastic bottles, can ends and other rigid packages on many palletizers and conveyor systems
- The sustainable, efficient and safe alternative to wooden pallets
- Increased deck ventilation ideal for automated and manual washing systems
- Two-piece snap-fit design
- Available in FDA approved material
- Tapered 4-way entry
- Different variants available

Plastic layer pads and top frames available



German Pallet Product Specifications

Dimensions (mm):	1180 x 1265 x 133
Weight:	21,6 kg
Load Capacity, stat.:	10.000 kg
Load Capacity, dyn.:	1.250 kg

OPTIONS:

- Bar coding
- Hot stamp
- Molded-in logo
- Grommets
- Custom colours