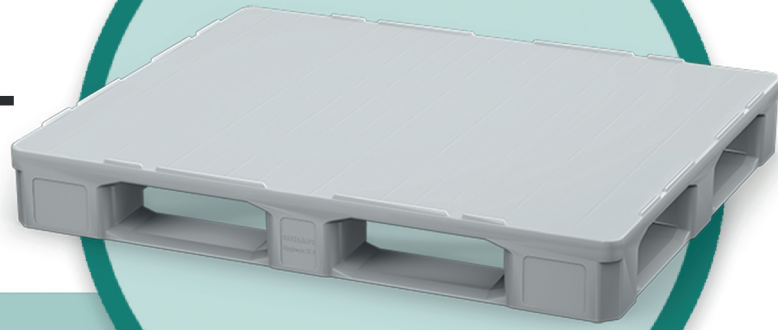


**REUSABLE RECYCLABLE SUSTAINABLE
NO PRODUCT DAMAGE**

HYGIENIC INDUSTRIAL PALLET 1200 x 1000

Closed and Food Safe



A perfect combination of mechanical performance and highest hygiene requirements

- Reduce risk of product contamination
- Available in FDA-compliant materials
- Smooth surface
- Non-porous
- Easily cleanable
- Stackable
- Available in fire-retardant materials
- Tapered 4-way entry

OPTIONS:

- Hot stamp
- Bar coding
- Molded-in logo
- Custom colors

Hygienic Pallet Product Specifications

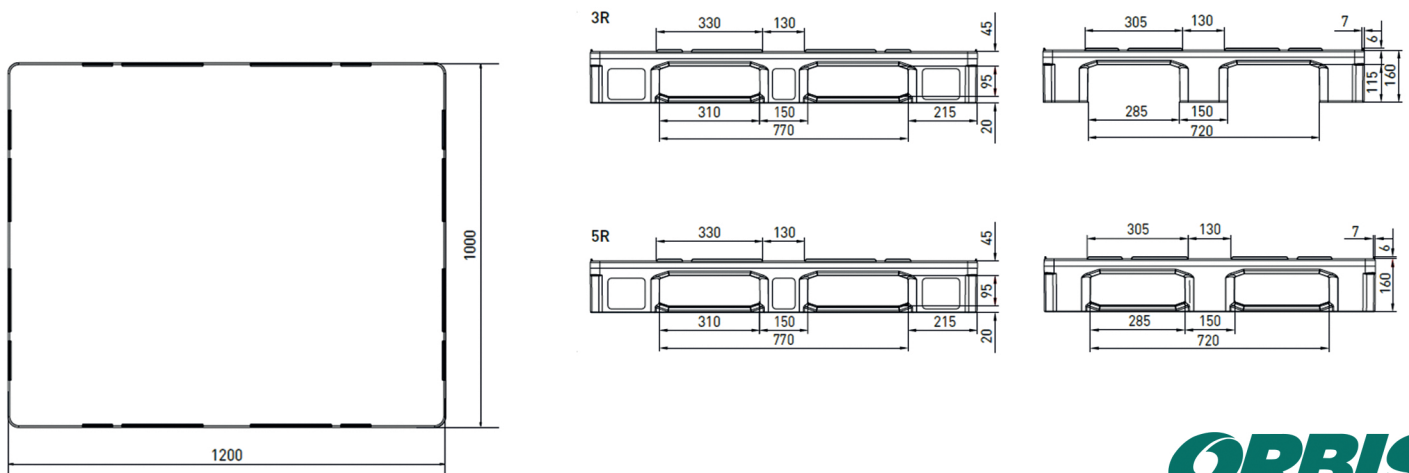
Specifications (All dimensions in mm, unless otherwise indicated)

Model		Hygienic Pallet	Hygienic Pallet
Bottom Support		3 runners	5 runners
Top Deck		closed	closed
Dimensions (mm)		1200 x 1000 x 160	1200 x 1000 x 160
Load Capacities (kg)	Static	5000	5000
	Dynamic	2500	2500
	Racking	1250	1250
Weight (kg)	HDPE	22	23
	PO	/	/
Pallets per	Stack	15	15
	Truck	390	390

Entry: 4 ways

Nesting Height: /

Safety rim: 6mm (optional without)



ORBIS[®]

Powered by Menasha Corporation